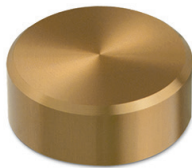


Custom Colors

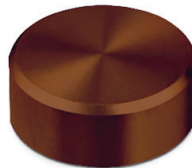
Custom colors are available on most of the Gyford StandOff Systems® product lines.

NOTE: *Color and finish samples may be requested if matching existing product.*

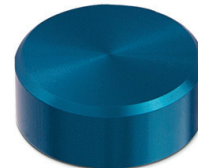
Anodized and plated parts are not recommended for outdoor use or high UV areas as fading may occur.



ANTIQUe BRASS
ANODIZE
Aluminum



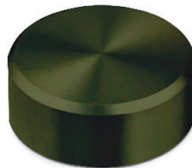
BRONZE
ANODIZE
Aluminum



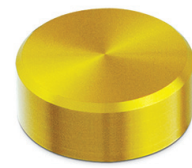
COBALT
ANODIZE
Aluminum



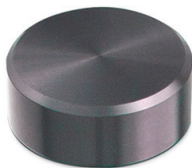
COPPER
ANODIZE
Aluminum



DARK OLIVE
ANODIZE
Aluminum



GOLD
ANODIZE
Aluminum



GRAPHITE
ANODIZE
Aluminum



GREEN
ANODIZE
Aluminum



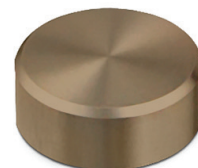
PINK
ANODIZE
Aluminum



PURPLE
ANODIZE
Aluminum



RED
ANODIZE
Aluminum

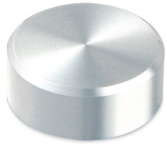


TAN
ANODIZE
Aluminum

The anodized colors represented may vary from the actual goods.

Stock Aluminum Finish

The majority of our parts are manufactured from aluminum, then anodized with a clear satin finish.



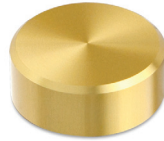
**CLEAR
ANODIZE**
Aluminum

Limited Stock Aluminum Colors

We have a limited selection available of black and brass StandOffs. Call or email for availability.



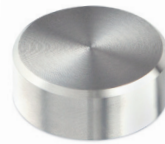
**BLACK
ANODIZE**
Aluminum



**BRASS
ANODIZE**
Aluminum

Stock Stainless Steel Finish

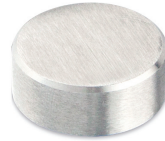
We manufacture a selection of caps and barrels from 316 stainless steel. Call or email for sizes and availability.



**MACHINED
STAINLESS**
Stainless Steel

Custom Stainless Steel Finishes

Custom finishes are available for most of the 316 Stainless Steel.



**BRUSHED
STAINLESS**
Stainless Steel



**POLISHED
STAINLESS**
Stainless Steel

Custom Aluminum Finishes



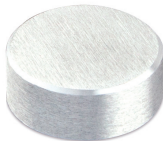
**POLISHED CLEAR
ANODIZE**
Aluminum



**POLISHED
CHROME PLATE**
Aluminum



**POLISHED
NICKEL PLATE**
Aluminum



**BRUSHED CLEAR
ANODIZE**
Aluminum



**BRUSHED
CHROME PLATE**
Aluminum



**BRUSHED
NICKEL PLATE**
Aluminum

CLEANING INSTRUCTIONS

Clean all anodized and stainless steel machined parts with a mild soap (e.g., Dawn®) and warm water solution. Do not use bleach, harsh acidic or alkaline cleaners as they could cause corrosion or staining. Always try a test area first.

Clean all plated parts (i.e., chrome & nickel) with a mild cleaner (e.g., Windex®). Always try a test area first.

Note: The anodized colors represented may vary from received goods. The actual color may vary per part based upon various conditions (i.e., types of materials, types of mfg. process, the actual anodize process, etc). Anodized and plated parts are not recommended for outdoor use or high UV areas as they may be subject to color fading.