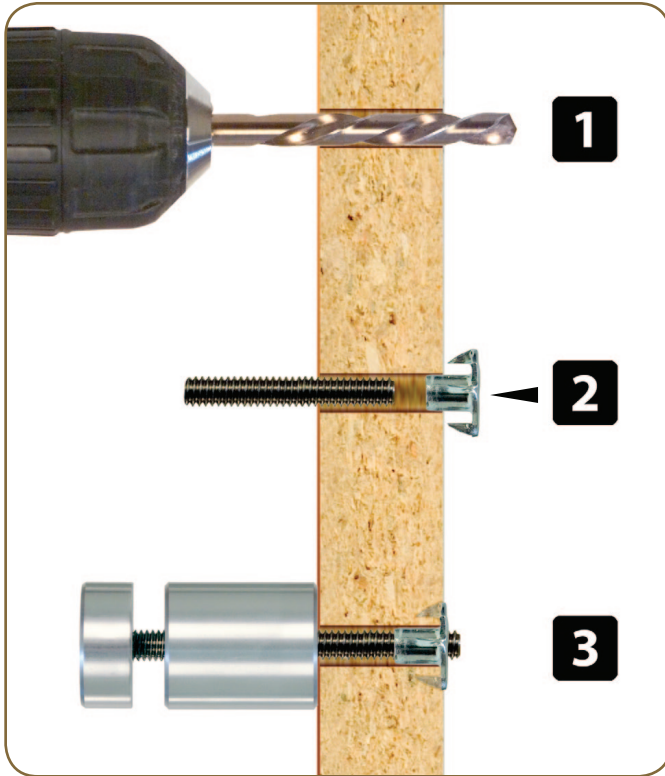


## T-Nut Inserts



(1) Pre-drill out the face side mounting surface to the proper hole size for the T-Nut from the chart below. NOTE: *T-Nuts require installation from the back side of your mounting surface.*

(2) From the back side of the mounting surface, install the T-Nut into the predrilled hold with a hammer. NOTE: *It is important to drive the T-Nut until it is fully seated to prevent it's falling out or spinning when hardware is attached during final assembly.*

(3) Thread the correct thread size and length into the installed T-Nut to attach the **Gyford StandOff Systems®** part for your application. The recommended thread length should be the same length as surface thickness or longer.

### T-Nut Drill Size & Depth

Part	Thread	Drill Size	Depth
HD-WTN1	10-24	1/4"	3/8"
HD-WTN2	1/4-20	5/16"	7/16"
HD-WTN3	5/16-18	3/8"	7/16"
HD-WTN4	5/16-18	3/8"	11/16"

**IMPORTANT**

These HOW TO instructions are GUIDELINES ONLY. Your installation may be different from those shown here. NO SAFETY GUARANTEE is expressed or implied in any installation unless such guarantee is provided IN WRITING by Gyford Productions on installations that Gyford Productions does. It is the responsibility of the INSTALLER and/or END USER to ensure that the parts and materials used in any installation are specified and engineered to meet the demands of their intended purpose.

Call 775.829.7272 to speak with our knowledgeable Client Solutions Specialists about your installation.