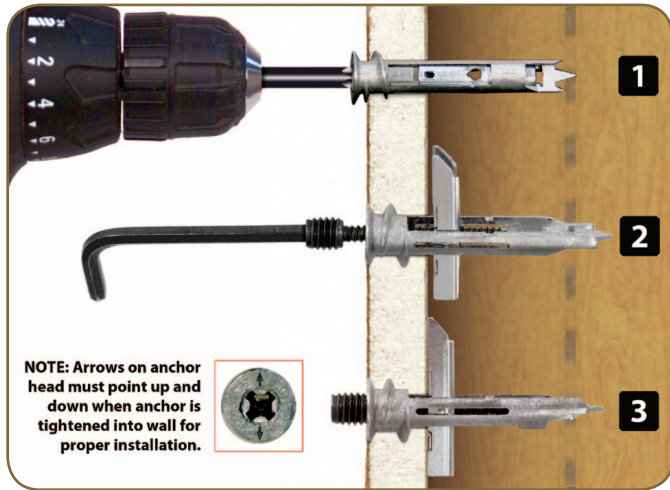


HD-TA Self-Drilling Toggle Anchors



(1) With a Phillips Bit, self-drill the anchors into position (please see notation on diagram). NOTE: *These anchors are intended for hollow walls 1/2" - 3/4" thick.*

(2) Insert the #8 screw into the installed anchor and tighten. As it's tightened, the toggle lever flips open and tightens inside the wall.

(3) When fully tightened, attach **Gyford StandOff Systems®** parts needed for your application.

NOTE: *For part numbers HD-STBA, HD-SDT that utilize the HD-TA anchor.*

IMPORTANT

These HOW TO instructions are GUIDELINES ONLY. Your installation may be different from those shown here. NO SAFETY GUARANTEE is expressed or implied in any installation unless such guarantee is provided IN WRITING by Gyford Productions on installations that Gyford Productions does. It is the responsibility of the INSTALLER and/or END USER to ensure that the parts and materials used in any installation are specified and engineered to meet the demands of their intended purpose.

Call 775.829.7272 to speak with our knowledgeable Client Solutions Specialists about your installation.