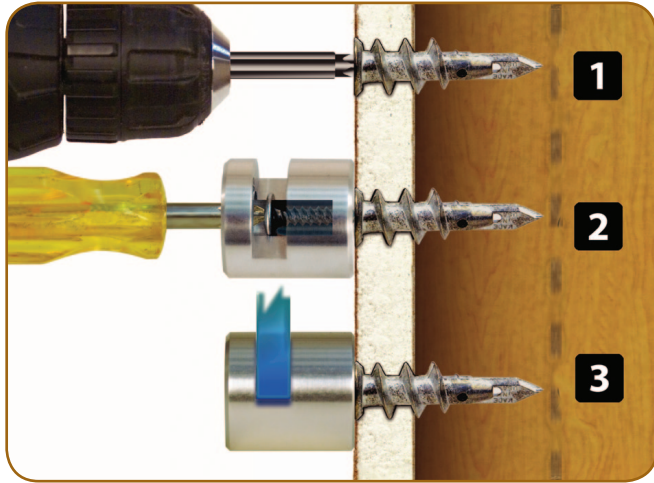


## HD-WBL Self-Drilling Wallboard Anchors



(1) With a Phillips Bit, self-drill the anchors into position. NOTE: *These anchors are not intended for wood or other dense materials. Intended for 1/2" or thicker drywall.*

(2) Insert the #8 screw into the installed anchor and tighten.

(3) When fully tightened, attach the of **Gyford StandOff Systems®** parts needed for your application.

NOTE: *For part numbers HD-WBSA, that utilize HD-WBL.*

**IMPORTANT**

*These HOW TO instructions are GUIDELINES ONLY. Your installation may be different from those shown here. NO SAFETY GUARANTEE is expressed or implied in any installation unless such guarantee is provided IN WRITING by Gyford Productions on installations that Gyford Productions does. It is the responsibility of the INSTALLER and/or END USER to ensure that the parts and materials used in any installation are specified and engineered to meet the demands of their intended purpose.*

*Call 775.829.7272 to speak with our knowledgeable Client Solutions Specialists about your installation.*