



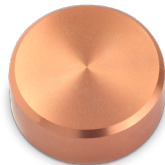
Black
Anodize



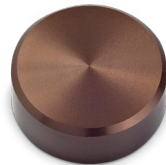
Brass
Anodize



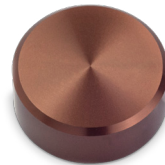
Antique Brass
Anodize



Copper
Anodize



Tan
Anodize



Bronze
Anodize



Flat White
Powder Coated



Flat Black
Powder Coated



Red
Anodize



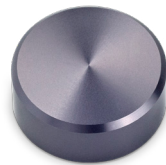
Pink
Anodize



Purple
Anodize



Blue
Anodize



Graphite
Anodize



Green
Powder Coated



Gloss White
Powder Coated



Oil Rubbed Bronze
Powder Coated



Clear
Anodize



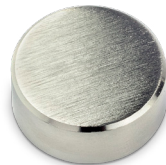
Brushed Clear
Anodize



Polished Clear
Anodize



Machine
Stainless



Brushed
Nickel



Polished
Stainless



Brushed
Stainless



Polished
Chrome

Custom Colors and Finishes

Products by Gyford StandOff Systems can be made in a wide variety of custom colors and finishes. Colors and finishes are available on a made-to-order basis, charges will vary based on quantity and finish and may require additional time to ship.

Stock Finish

Our standard products are made from US sourced aluminum, then anodized with a clear satin finish.

We also manufacture a selection of products from #316 stainless steel.



The Colored Cap Demo Display contains only a sampling of what's possible with custom colors and finishes.

Limited Stock Custom Colors

Limited sizes of black and brass anodized StandOffs are kept in stock without the typical wait-time of a custom order.



Custom Colors

We offer many custom anodized color coatings as well as the entire RAL palette for powder coating.

Note: The anodized colors represented online or in print may vary from actual goods. The actual color may vary per part based upon various conditions (ie: types of materials, types of mfg. process, the actual anodize process, etc). Anodized and plated parts are not recommended for outdoor use or high UV areas as they may be subject to color fading.



RAL color chart with a sample of custom colored and finished standoffs



Made in the USA from 100% recyclable aluminum and stainless steel. More at standoffsystems.com/green.



Call 775.829.7272
Visit standoffsystems.com
Email info@standoffsystems.com